



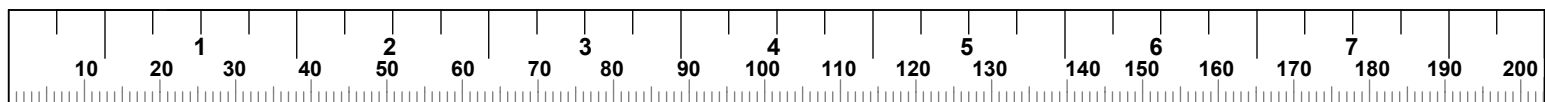
TANK

Руководство по сборке

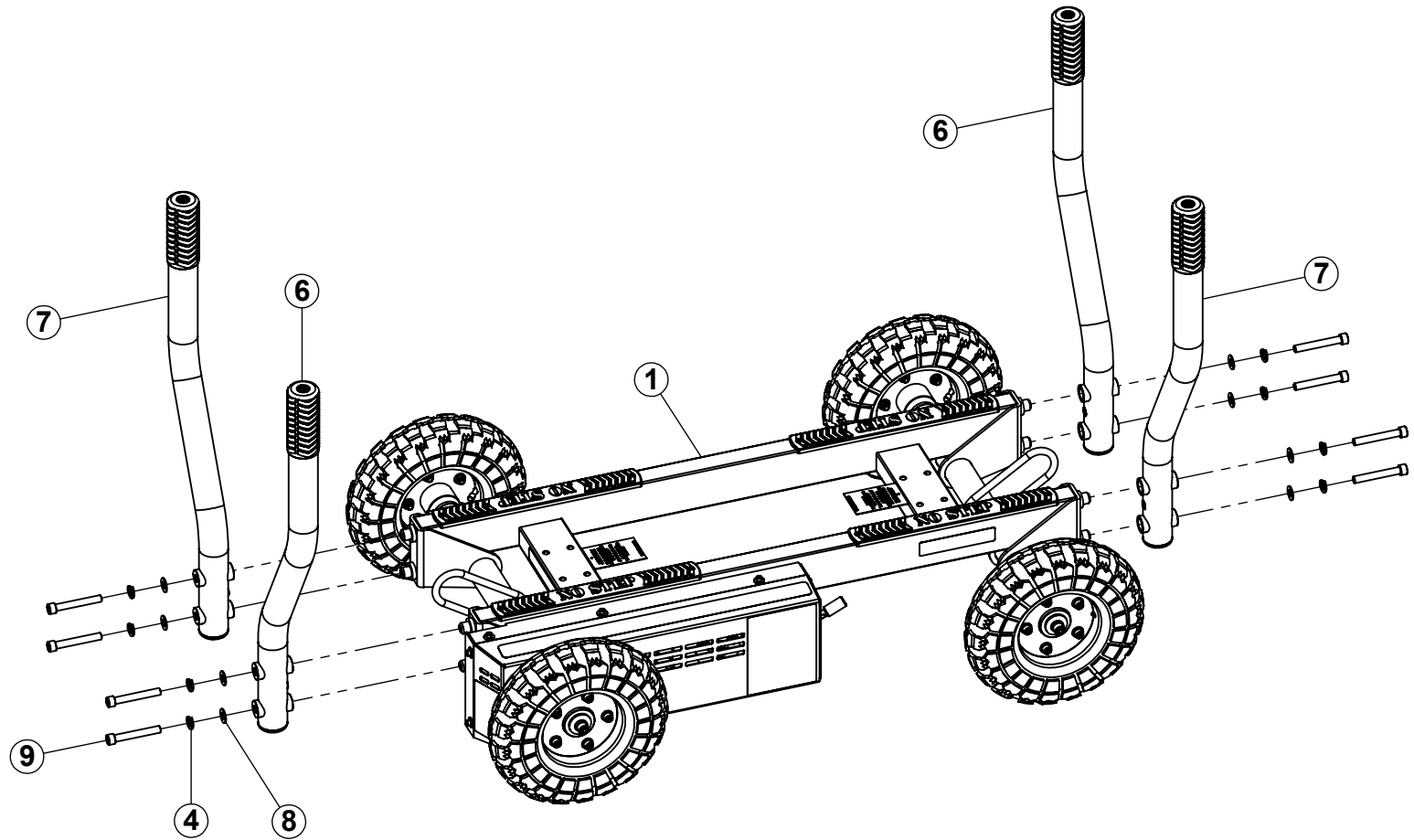
| НОМ. | АРТИКУЛ ИЗДЕЛИЯ | ОПИСАНИЕ | КОЛ- ВО |
|------|--------------------|---|------------|
| 1 | 5620901 | КОРПУС ТОРМОЗА | 1 |
| 2 | 5553001 | КОЛЕСО, ДИАМ. 12" X ШИР. 3.5 | 4 |
| 3 | 2011201 | ШАЙБА, СТАЛЬ 12.7, ID-40 OD-4, ЦИНК | 4 |
| 4 | 2010901 | ШАЙБА, ПРУЖИННАЯ M12 | 12 |
| 5 | 2011301 | ВИНТ, M12-1.75 X 30 Д, ПОД ТОРЦ. КЛЮЧ, ПРОЧ. - 12.9, ЦИНК | 4 |
| 6 | 5536101 | РЫЧАГ, ПРАВЫЙ | 2 |
| 7 | 5536001 | РЫЧАГ, ЛЕВЫЙ | 2 |
| 8 | 2010801 | ШАЙБА, СТАЛЬ 12.7, ID-25 OD-2, ЦИНК | 8 |
| 9 | 2010701 | ВИНТ, M12-1.75 X 85 Д, ПОД ТОРЦ. КЛЮЧ, ПРОЧ. - 12.9, ЦИНК | 8 |
| 10 | 56024РА | ДЕРЖАТЕЛИ ДЛЯ ДИСКОВ | 2 |
| 11 | 2010501 | ШАЙБА, СТАЛЬ 10.5, ID-20 OD-2, ЦИНК | 20 |
| 12 | 2010601 | ВИНТ, M10-1.5 60 Д, ПОД ТОРЦ. КЛЮЧ, ПРОЧ. - 12.9, ЦИНК | 8 |
| 13 | 2012301 | ГАЙКА, ШЕСТИГРАННАЯ СТОПОРНАЯ M10-1.5, ПРОЧ. - 10, ЦИНК | 8 |
| 14 | 55724РА | ЛЕВЫЙ РЫЧАГ (ДОП. ОПЦИЯ) | 2 |
| 15 | 55726РА | ПРАВЫЙ РЫЧАГ (ДОП. ОПЦИЯ) | 2 |
| 16 | 5572101 | ГОРИЗОНТАЛЬНЫЙ РЫЧАГ (ДОП. ОПЦИЯ) | 2 |
| 17 | 2012801 | ВИНТ, M10-1.5 X 25 Д, ПОД ТОРЦ. КЛЮЧ, ПРОЧ. - 12.9, ЦИНК | 4 |
| 18 | 5602701 | БАМПЕР (ДОП. ОПЦИЯ) | 4 |
| 19 | 5433701 | РАСПОРНАЯ ВТУЛКА, ФЛАНЕЦ | 8 |

СОДЕРЖАНИЕ

- СБОРКА: СТРАНИЦЫ 3 - 5
- РЕГУЛИРОВКА НАТЯЖЕНИЯ ЦЕПИ: СТРАНИЦЫ 6 - 9 и 11 - 13
- РЕГУЛИРОВКА НАТЯЖЕНИЯ РЕМНЯ: СТРАНИЦЫ 6 - 8 и 10 - 13
- УСТАНОВКА КОМПЛЕКТА РУКОЯТОК (ДОП. ОПЦИЯ): СТРАНИЦЫ 14 - 15
- КОМПЛЕКТ БАМПЕРОВ (ДОП. ОПЦИЯ): СТРАНИЦЫ 16 - 17
- ПРОВЕРКА И ОБСЛУЖИВАНИЕ: СТРАНИЦА 18
- ПРИМЕЧАНИЯ: СТРАНИЦА 19

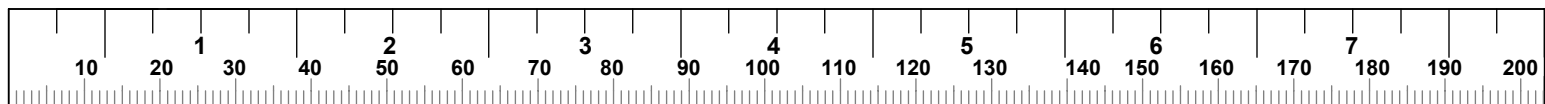


ШАГ 2

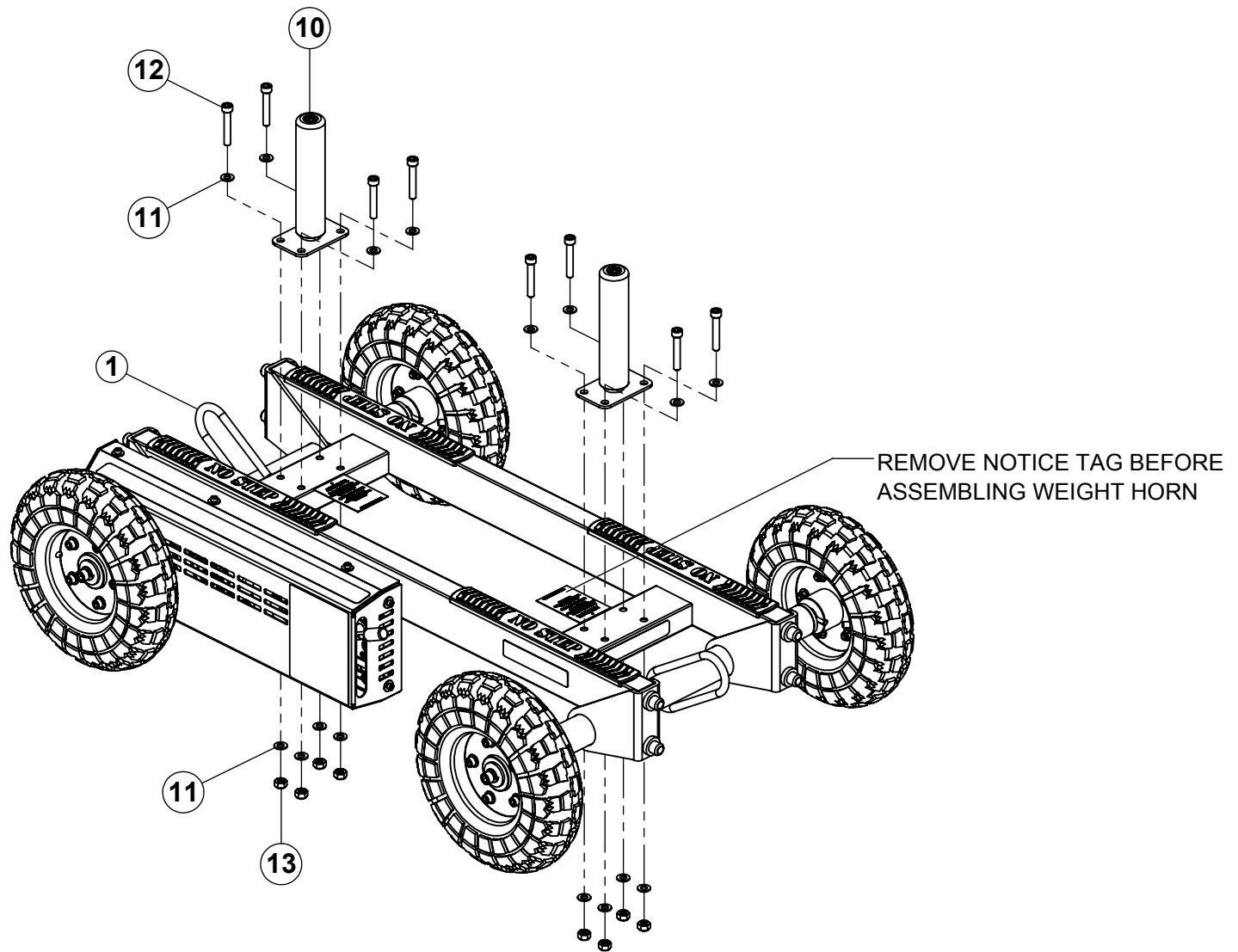


NOTE:

SECURELY tighten all bolt connections in this step.



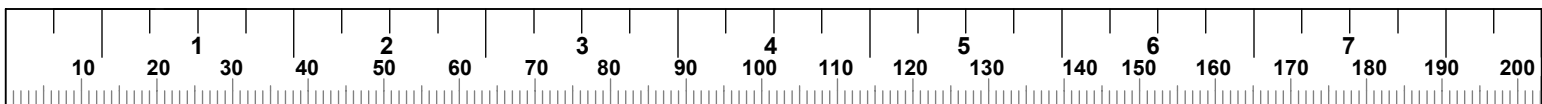
ШАГ 3



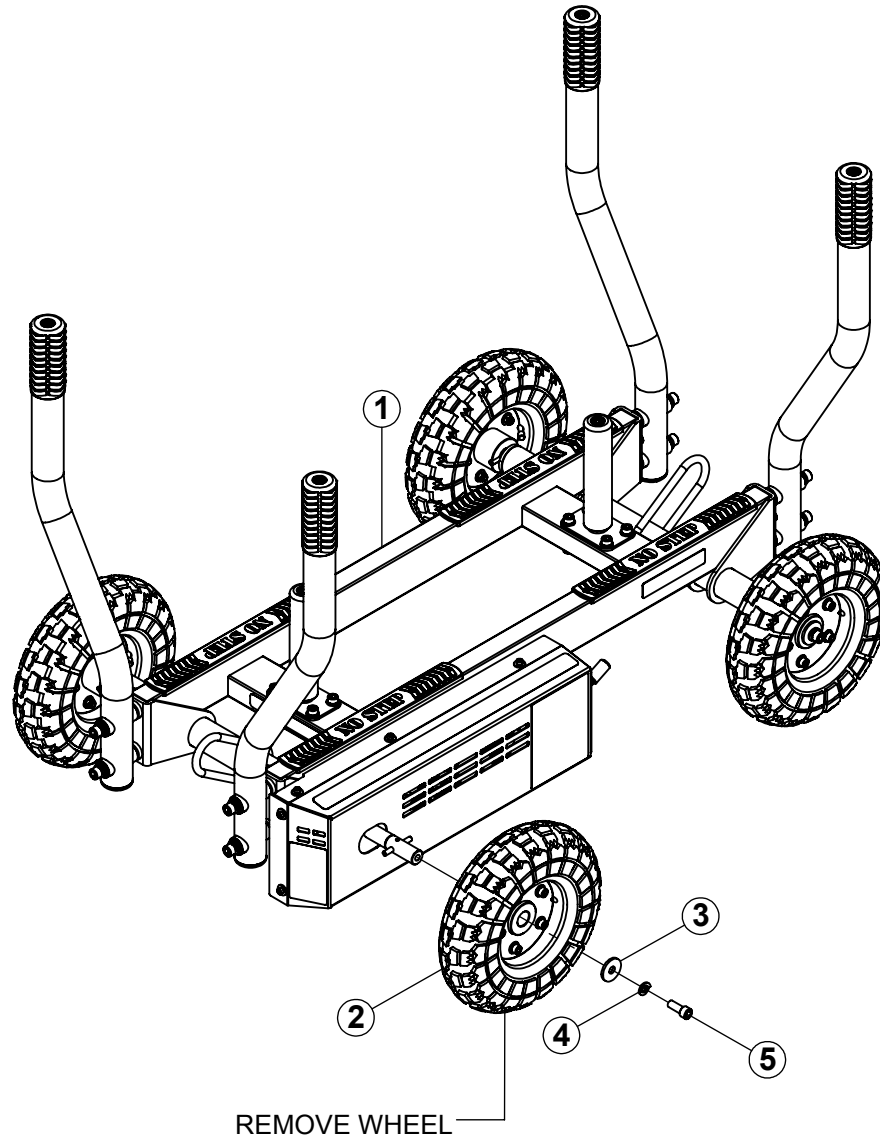
NOTE:

SECURELY tighten all bolt connections in this step.

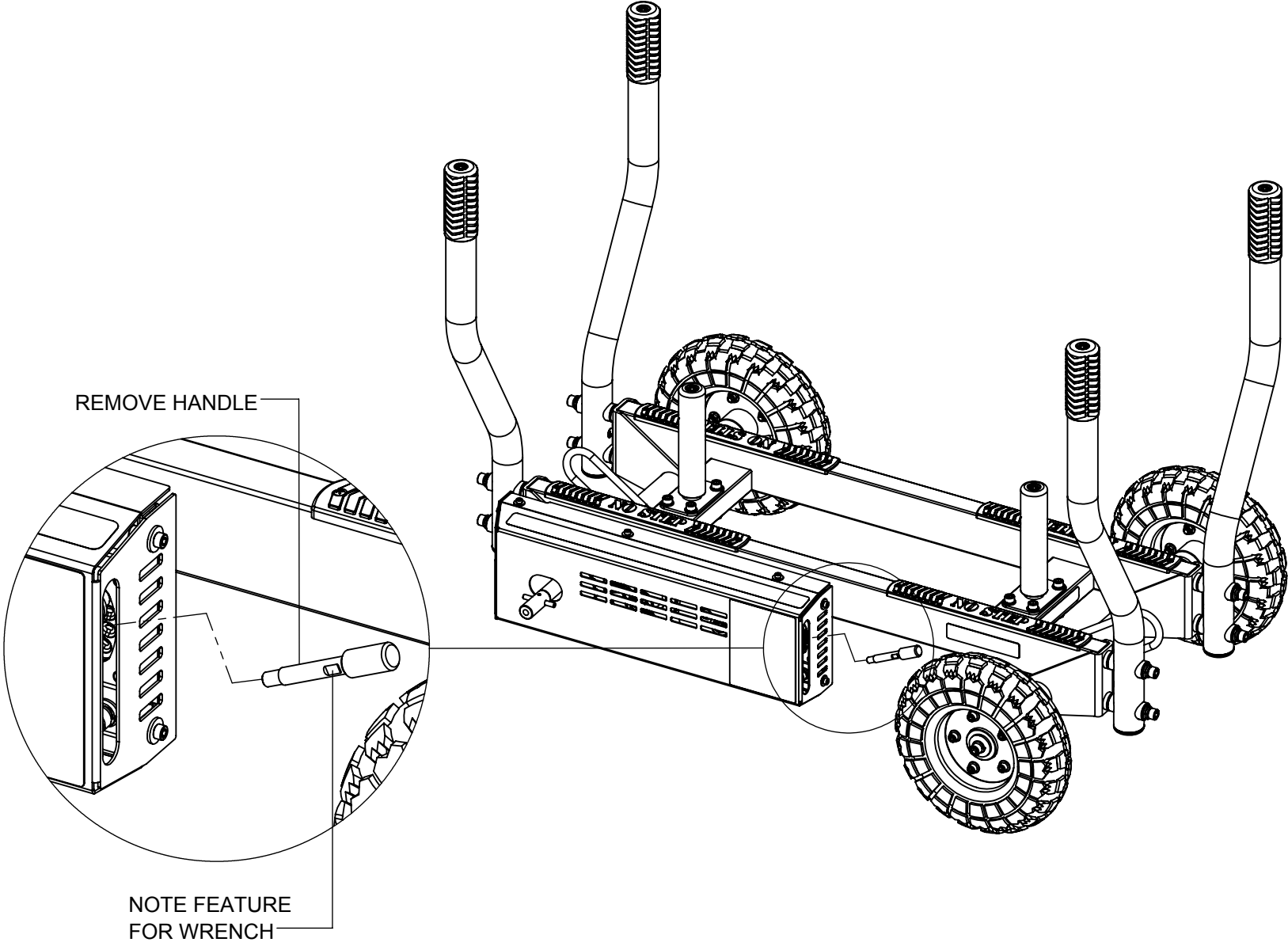
Handles have been hidden for assembly clarity.



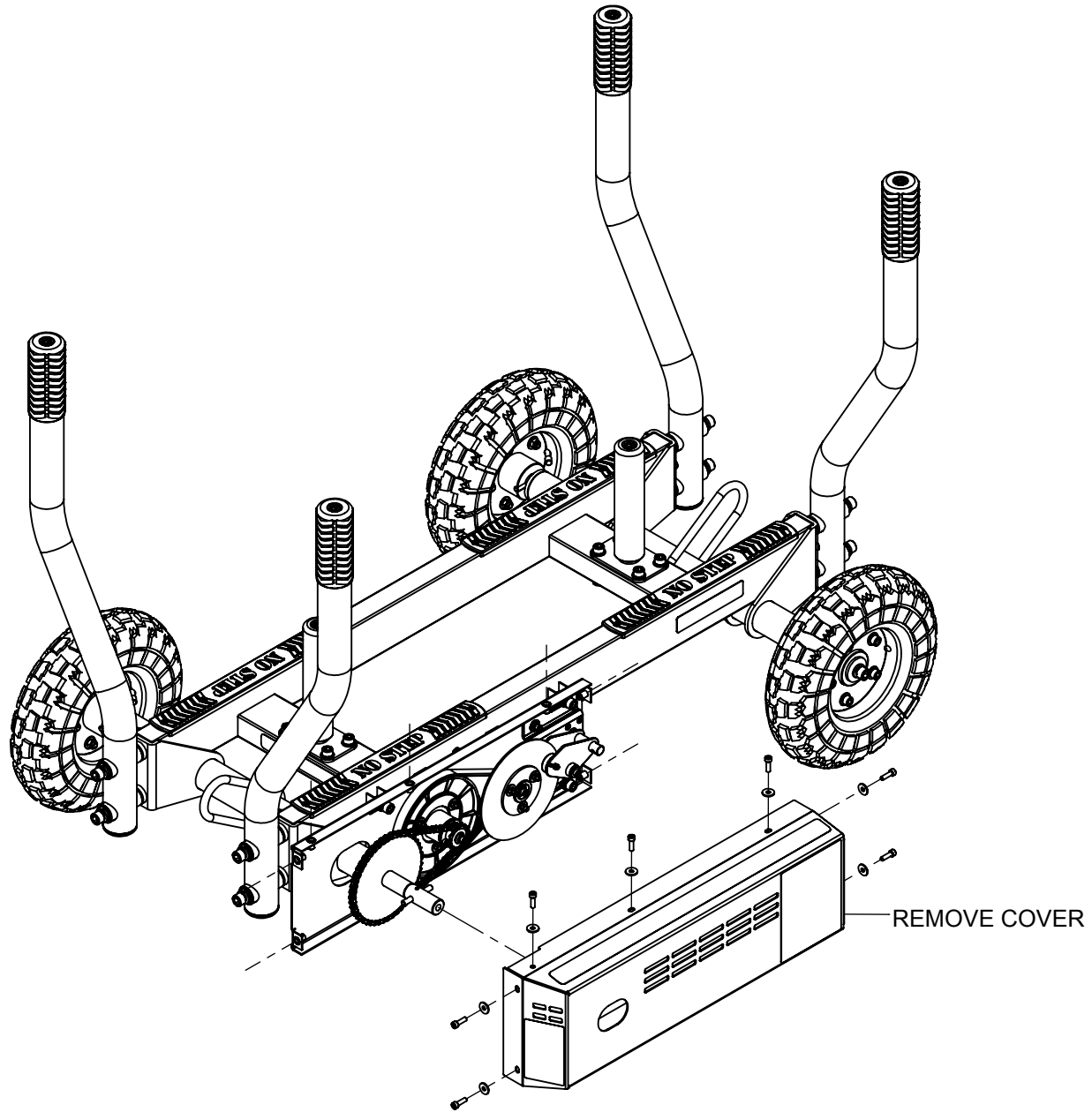
CHAIN AND BELT ADJUSTMENT



CHAIN AND BELT ADJUSTMENT

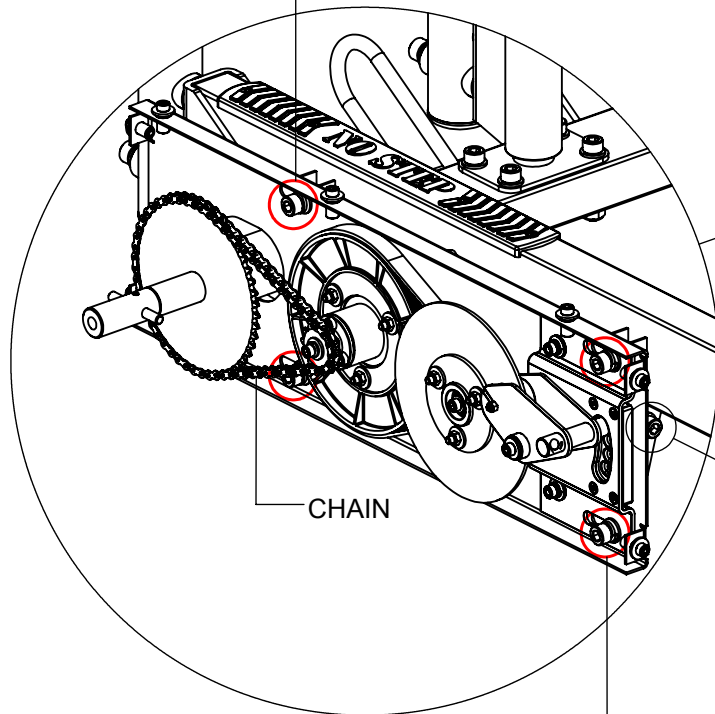


CHAIN AND BELT ADJUSTMENT

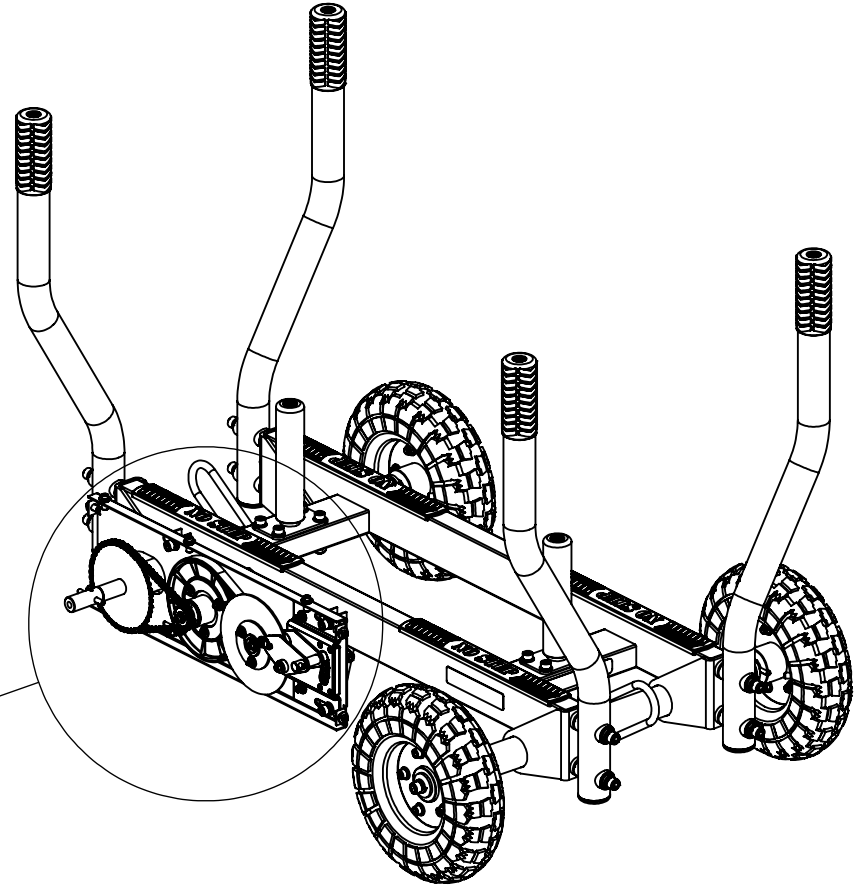


CHAIN ADJUSTMENT

1. LOOSEN FOUR BOLTS (CIRCLED)



3. RETIGHTEN FOUR BOLTS (CIRCLED)

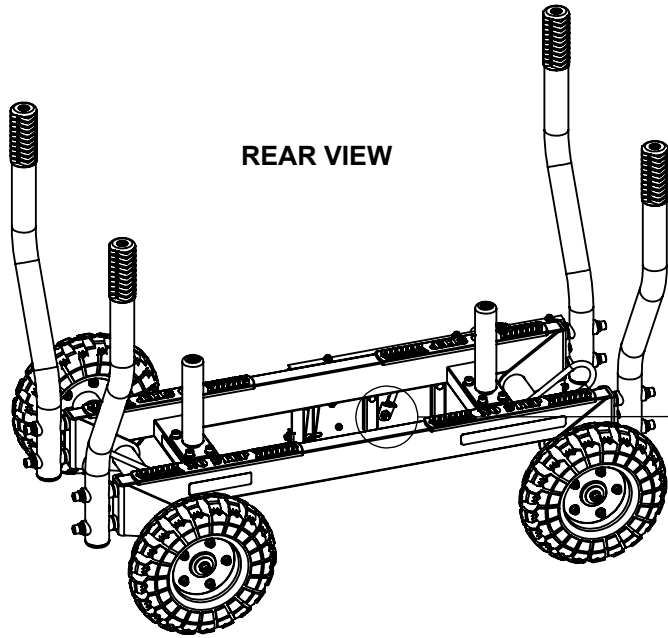


2. TURN BOLT CLOCKWISE TO TIGHTEN CHAIN.
TURN BOLT COUNTER CLOCKWISE TO LOOSEN CHAIN.

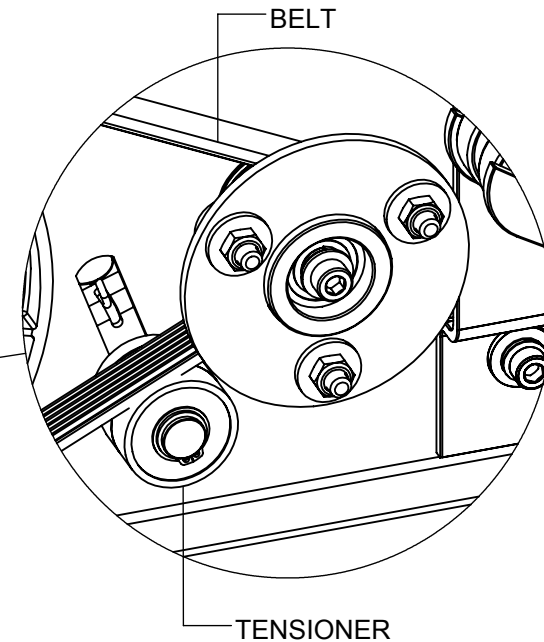
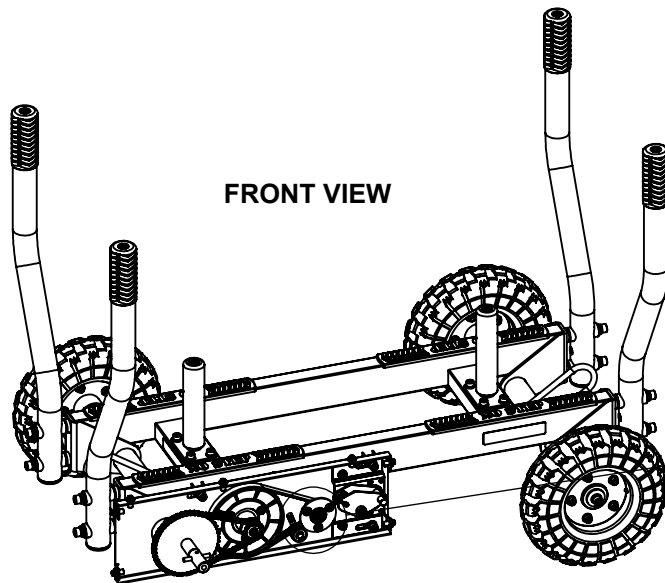
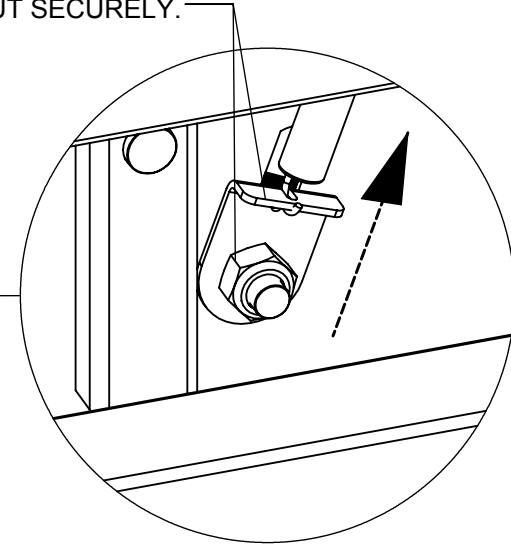
NOTE:

The chain tension on TANK is pre-set at the factory. However, if the chain becomes too loose or is too tight, then please follow the steps in numbered order to adjust.

BELT ADJUSTMENT



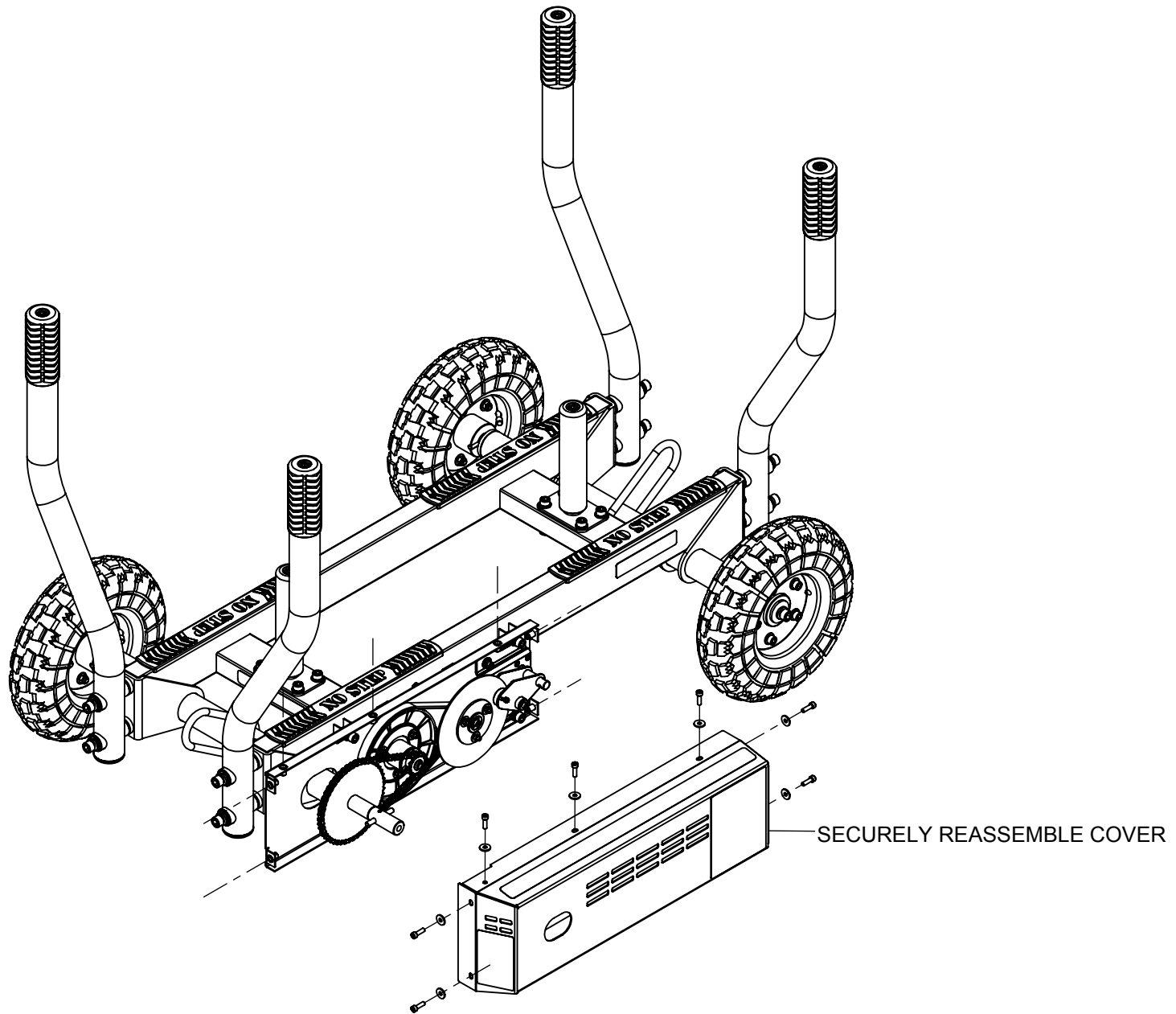
TO TENSION BELT, LOOSEN NUT **SLIGHTLY** AND PULL UP ON TENSIONER BRACKET. RETIGHTEN NUT SECURELY.



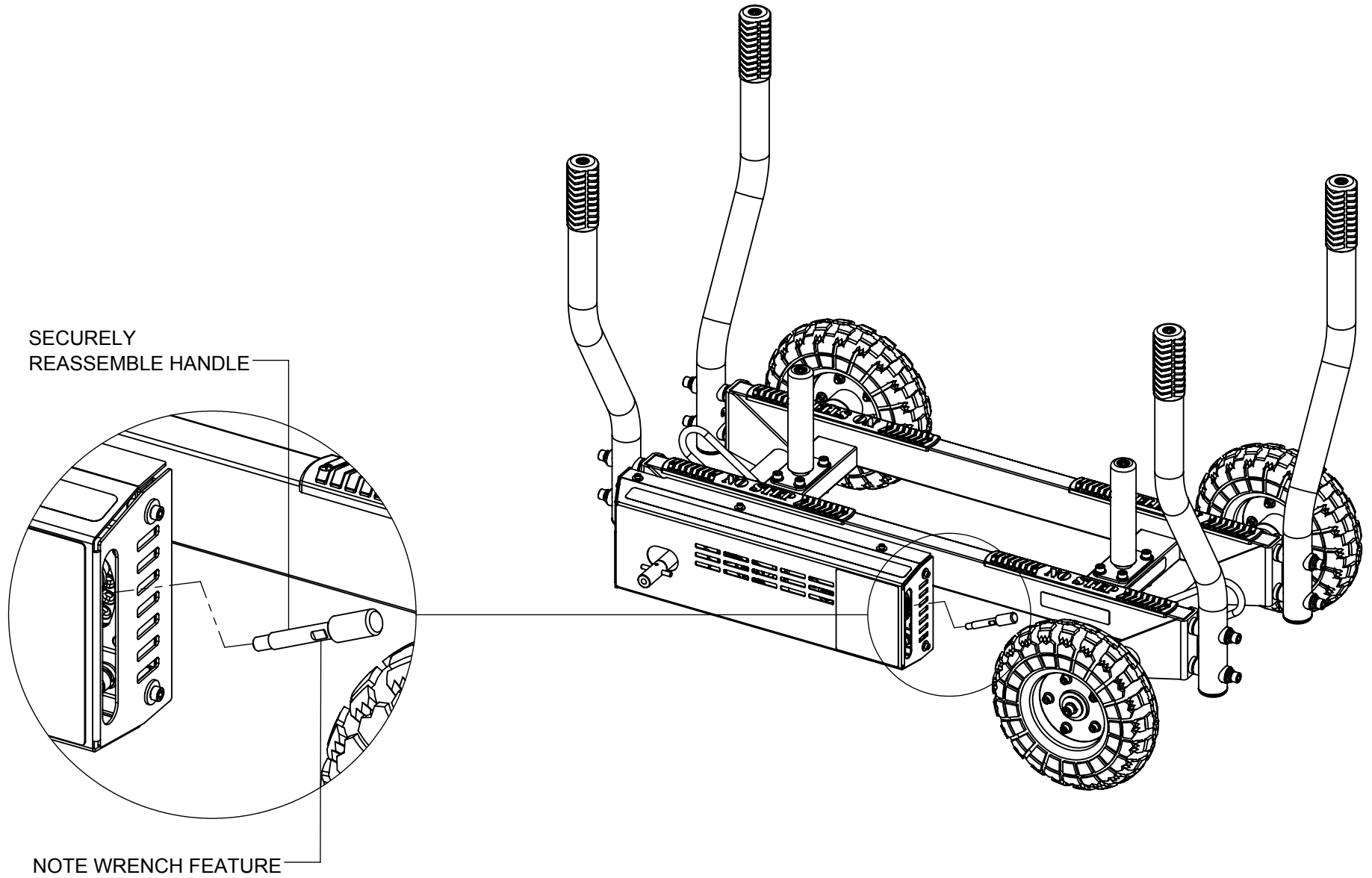
NOTE:

The belt tension on TANK is pre-set at the factory. However if belt is too loose or starts to slip, then please follow this step.

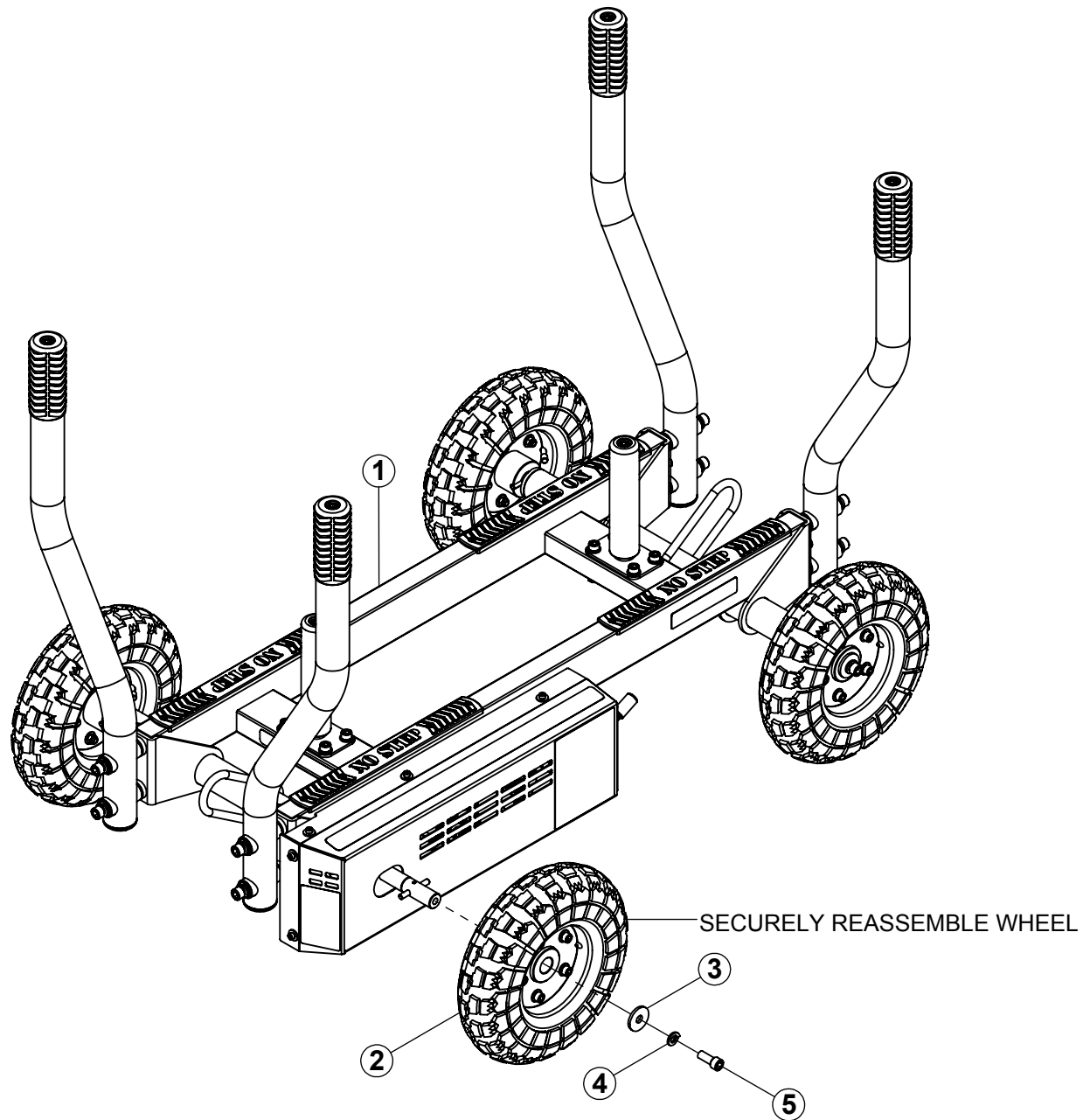
CHAIN AND BELT ADJUSTMENT



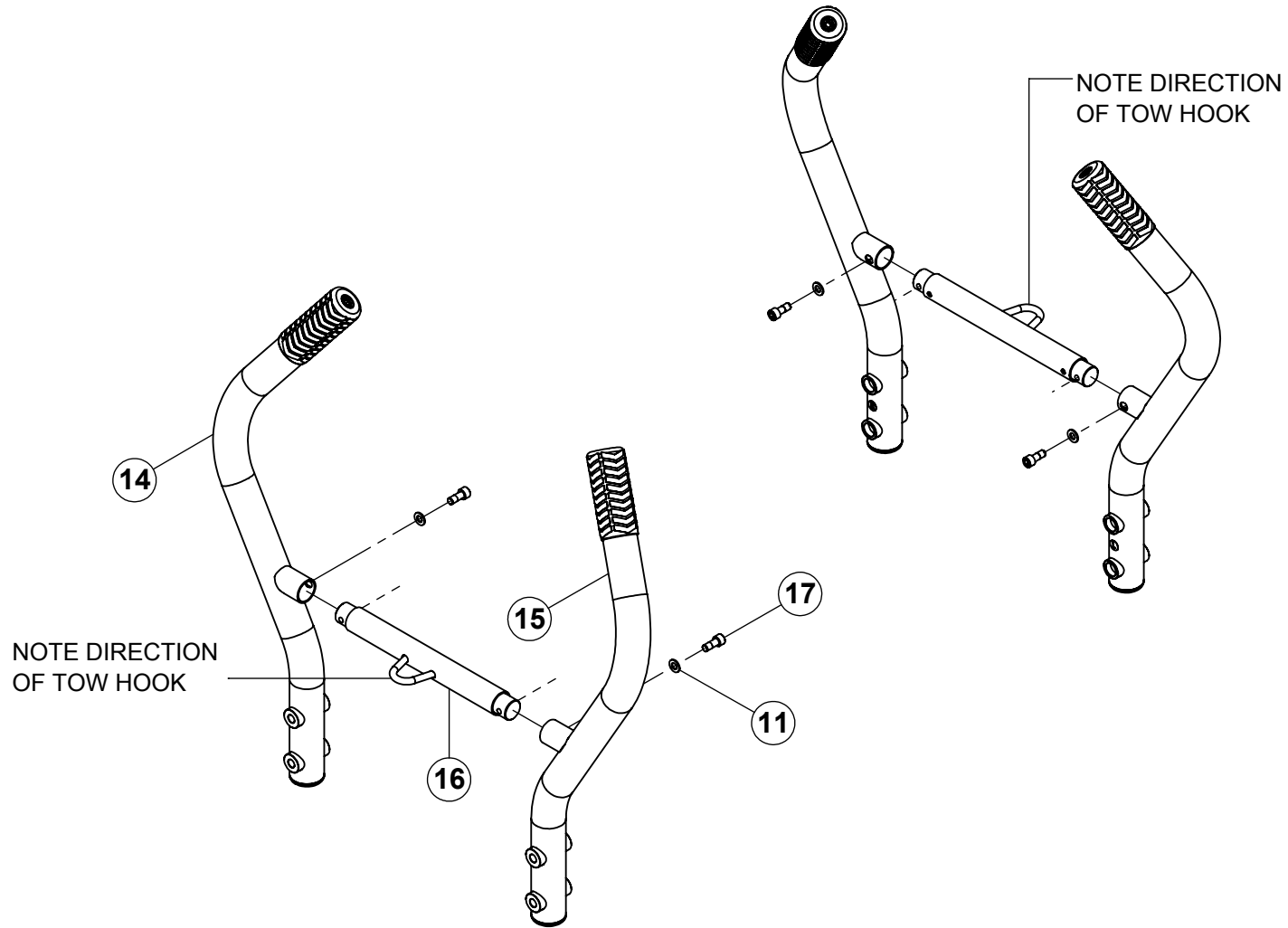
CHAIN AND BELT ADJUSTMENT



CHAIN AND BELT ADJUSTMENT

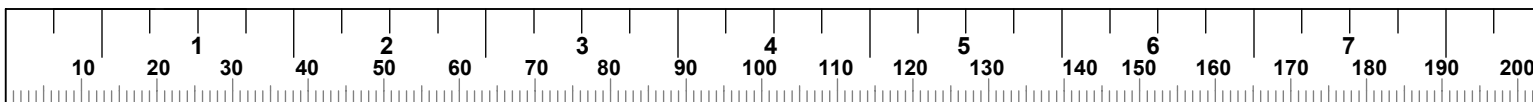


XTPHK
PERFORMANCE HANDLE KIT (OPTIONAL)

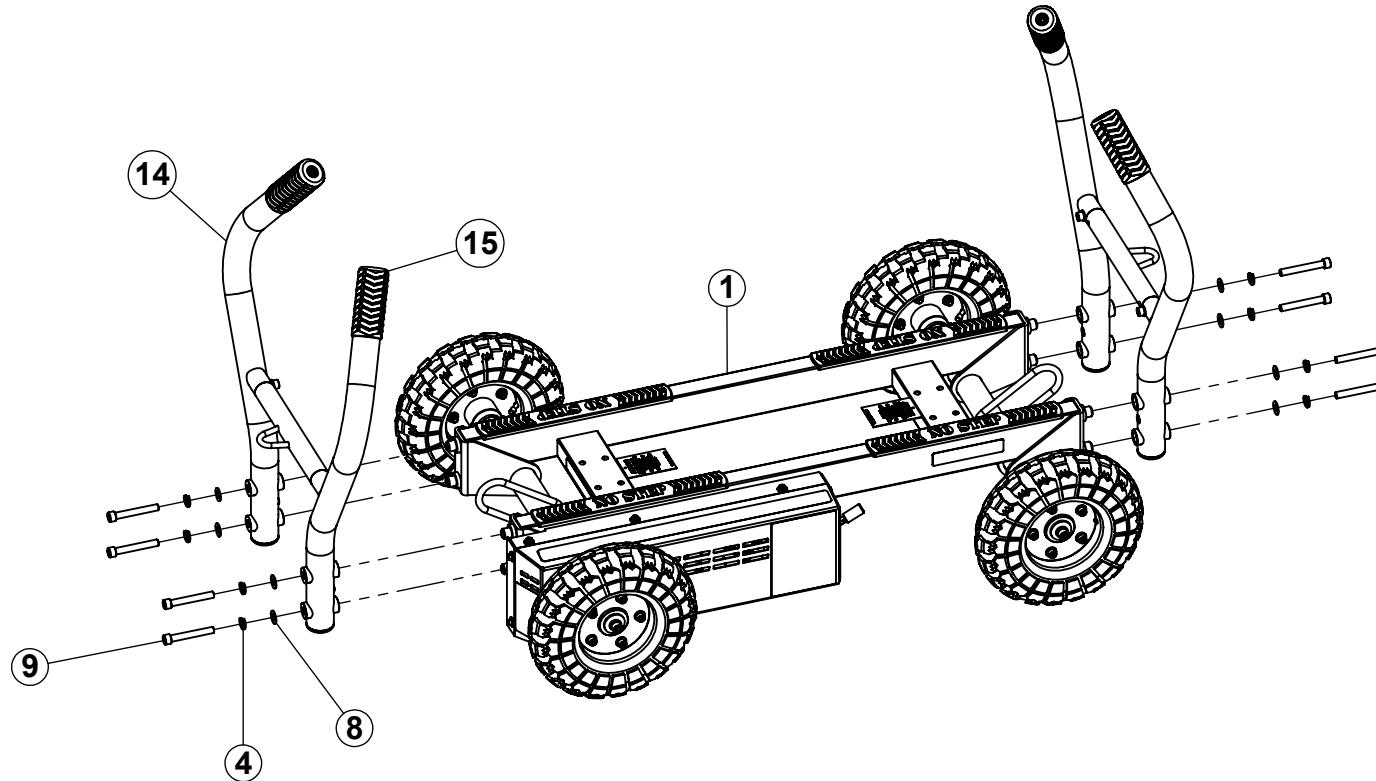


NOTE:

LOOSELY tighten bolt connections in this step.

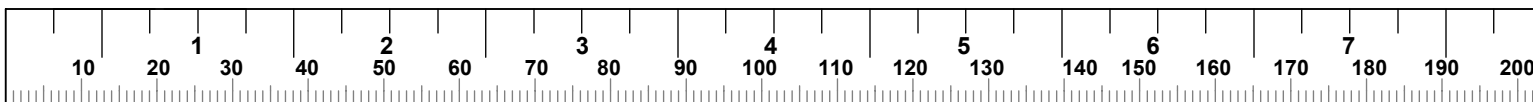


XTPHK
PERFORMANCE HANDLE KIT (OPTIONAL)

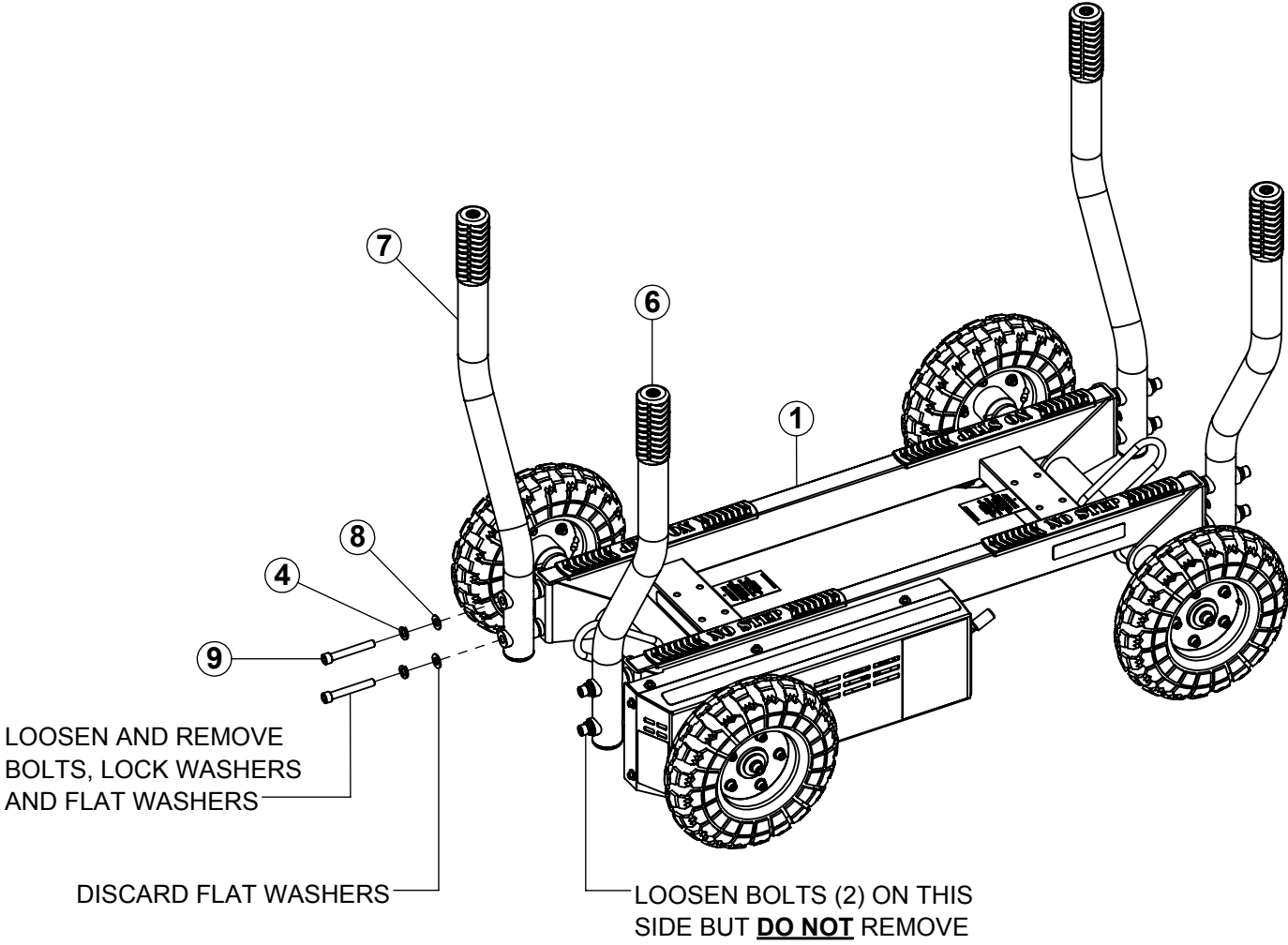


NOTE:

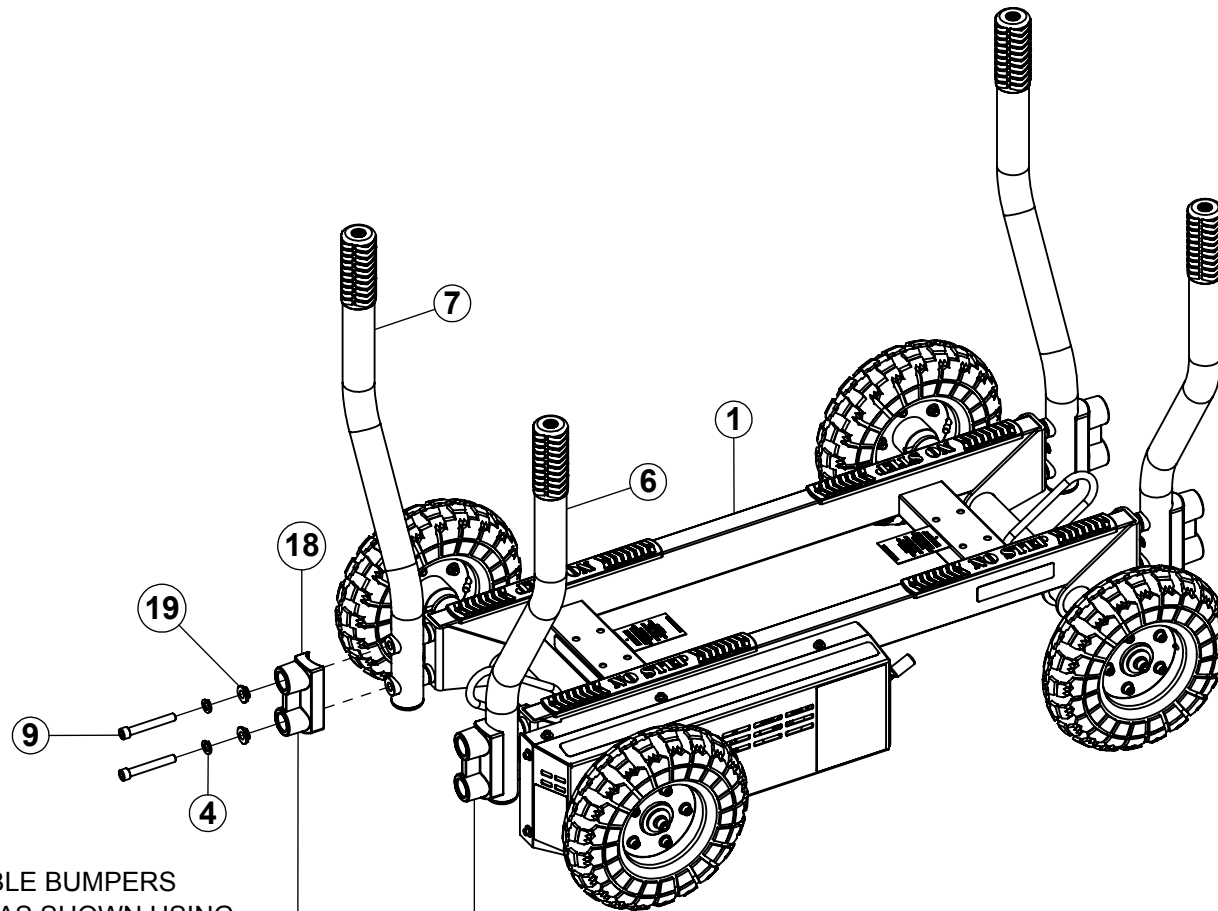
After this step has been completed, **SECURELY** tighten all bolt connections in this step and previous step.



**XTBK
TANK BUMPER KIT (OPTIONAL)**



**XTBK
TANK BUMPER KIT (OPTIONAL)**



LOOSELY ASSEMBLE BUMPERS TO THE HANDLES AS SHOWN USING FLANGE SPACERS, BOLTS AND LOCK WASHERS FROM PREVIOUS STEP

REPEAT THIS STEP, ONE AT A TIME FOR REMAINING 3 BUMPERS. KEEP BOLTS LOOSE UNTIL ALL BUMPERS ARE ASSEMBLED.

NOTE:

Once all bumpers have been assembled, **SECURELY** tighten all bolt connections.

INSPECTION & LUBRICATION

INSPECTION:

Recommended tire inflation: 20 PSI

Once a month, check for loose bolts on handles, wheels and weight horns as indicated. Tighten if necessary.

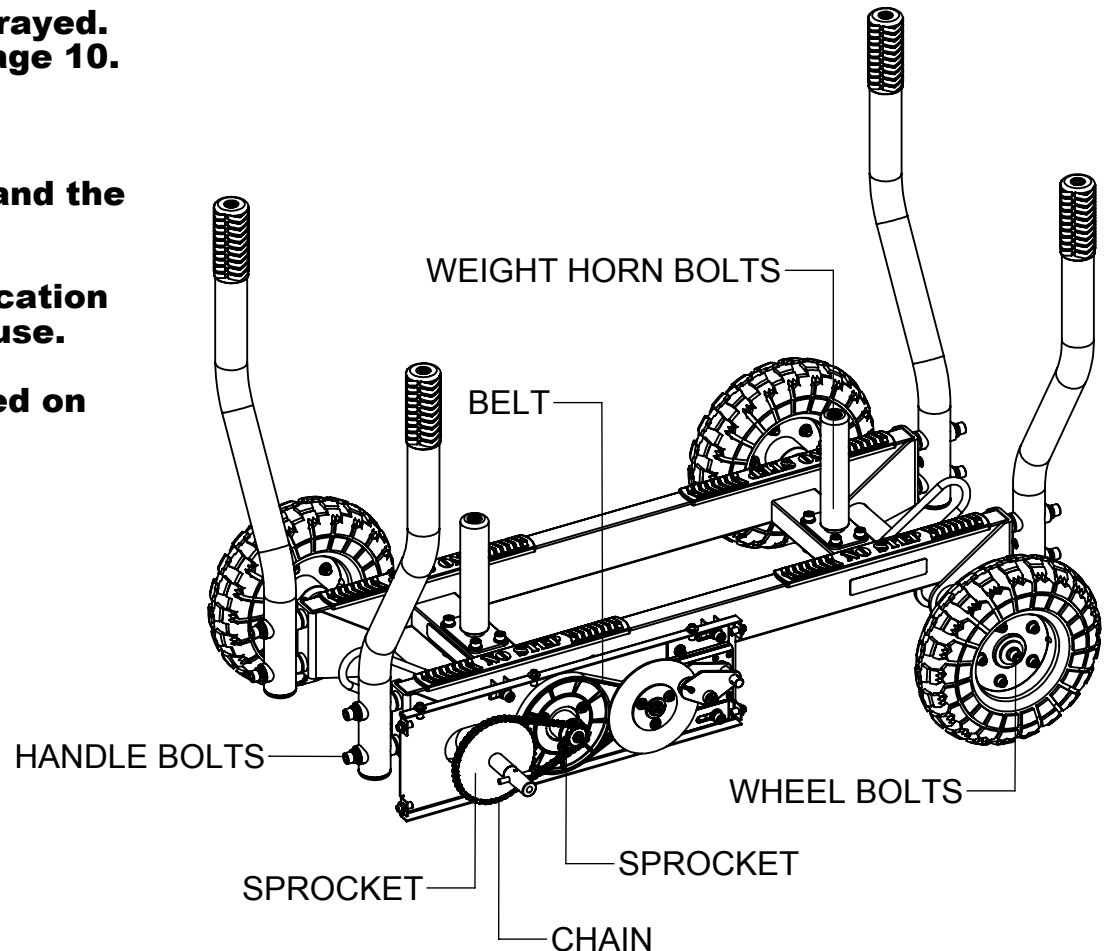
Once a month, check that the chain and sprocket are clean, free of rust, dust and grime. Make sure that the chain is properly lubricated. If chain is loose, retighten chain as outlined on page 9.

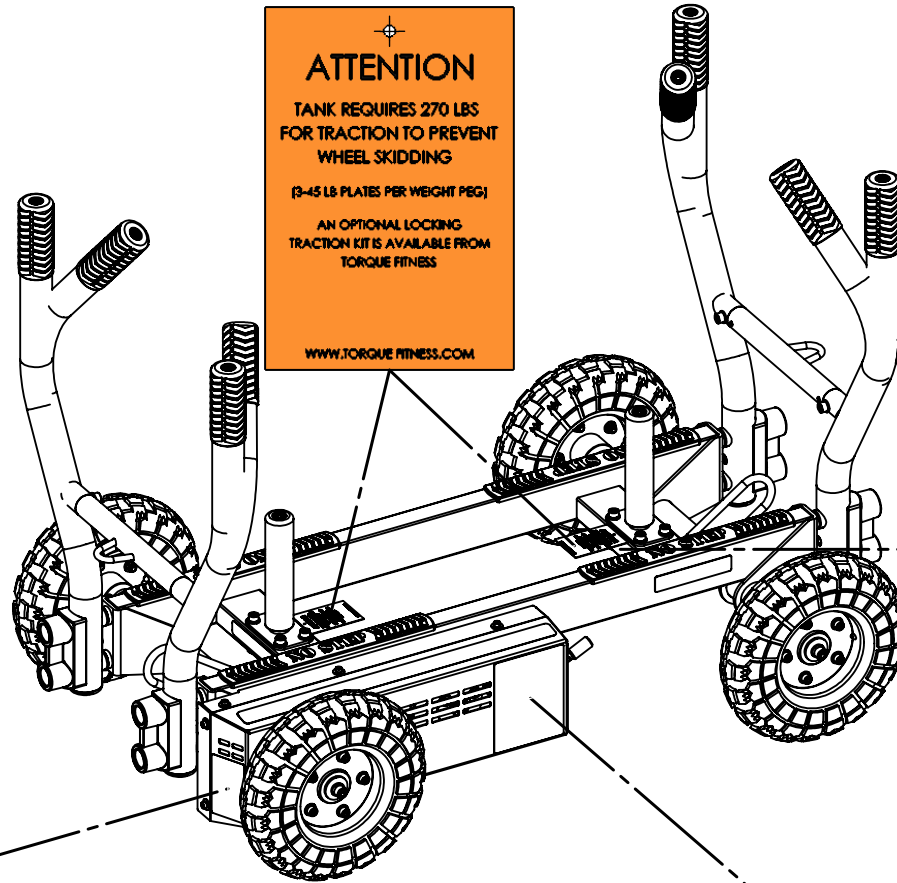
Once a month, inspect belt. Make sure the belt is not worn, frayed or loose. Replace belt if worn or frayed. If belt is loose, re-tension belt as outlined on page 10.


LUBRICATION:

Once a month the sprocket should be cleaned and the chain should be lubricated.

RECOMMENDED LUBRICATION: Use a Dry lubrication for indoor use, and wet lubrication for outdoor use. Most bicycle shops carry a variety of different lubricants and can recommend a lubricant based on the conditions where the TANK will be used.






ATTENTION
 TANK REQUIRES 270 LBS
 FOR TRACTION TO PREVENT
 WHEEL SKIDDING
 (3-45 LB PLATES PER WEIGHT PEG)
 AN OPTIONAL LOCKING
 TRACTION KIT IS AVAILABLE FROM
 TORQUE FITNESS

WWW.TORQUEFITNESS.COM




TORQUE FITNESS
 5500 Holly Street NW
 Coon Rapids, MN 55433
PH: 763.452.0000

 **WARNING**
 Before working on or inside any piece of equipment, consult your physician. Machine contains moving parts. To avoid injury, keep children and pets away from the work area. Do not drink alcohol while operating the machine. Read and follow all warnings and instructions in the user manual and product literature. Report all label damage to the manufacturer.

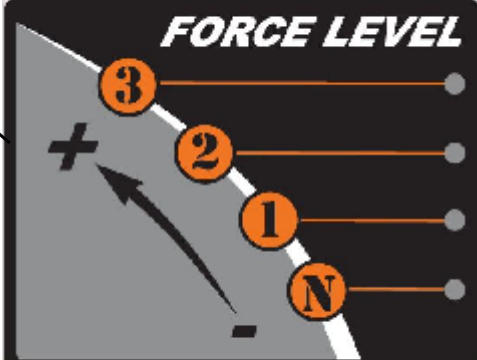
 **WARNING**
 Antes de trabajar en o dentro de cualquier pieza de equipo, consulte a su médico. Este equipo contiene partes móviles. Evite lesiones manteniendo a los niños y mascotas alejados del área de trabajo. No consuma alcohol durante el uso de la máquina. Lea y siga todas las advertencias e instrucciones en el manual del usuario y la literatura del producto. Reporte todo daño de la etiqueta al fabricante.

 **AVERTISSEMENT**
 Avant de travailler sur ou à l'intérieur de n'importe quel équipement, consultez votre médecin. L'équipement contient des pièces mobiles. Pour éviter les blessures, gardez les enfants et les animaux domestiques éloignés de la zone de travail. Ne consommez pas d'alcool pendant l'utilisation de la machine. Lisez et suivez toutes les avertissements et les instructions dans le manuel de l'utilisateur et la littérature du produit. Signalez tout dommage de l'étiquette au fabricant.

 **ADVERTÊNCIA!**
 Antes de trabalhar em qualquer equipamento, consulte seu médico. Este equipamento possui partes móveis. Para evitar lesões, mantenha crianças e animais domésticos afastados da área de trabalho. Não consuma álcool durante o uso da máquina. Leia e siga todas as advertências e instruções no manual do usuário e na literatura do produto. Reporte todo dano da etiqueta ao fabricante.

 **WARNING**
DO NOT PULL machine in position
 (N or 1)

FORCE LEVEL



NOTICE
 To prevent wheel skidding, 270 lbs (Six 45 lb plates) must be used.